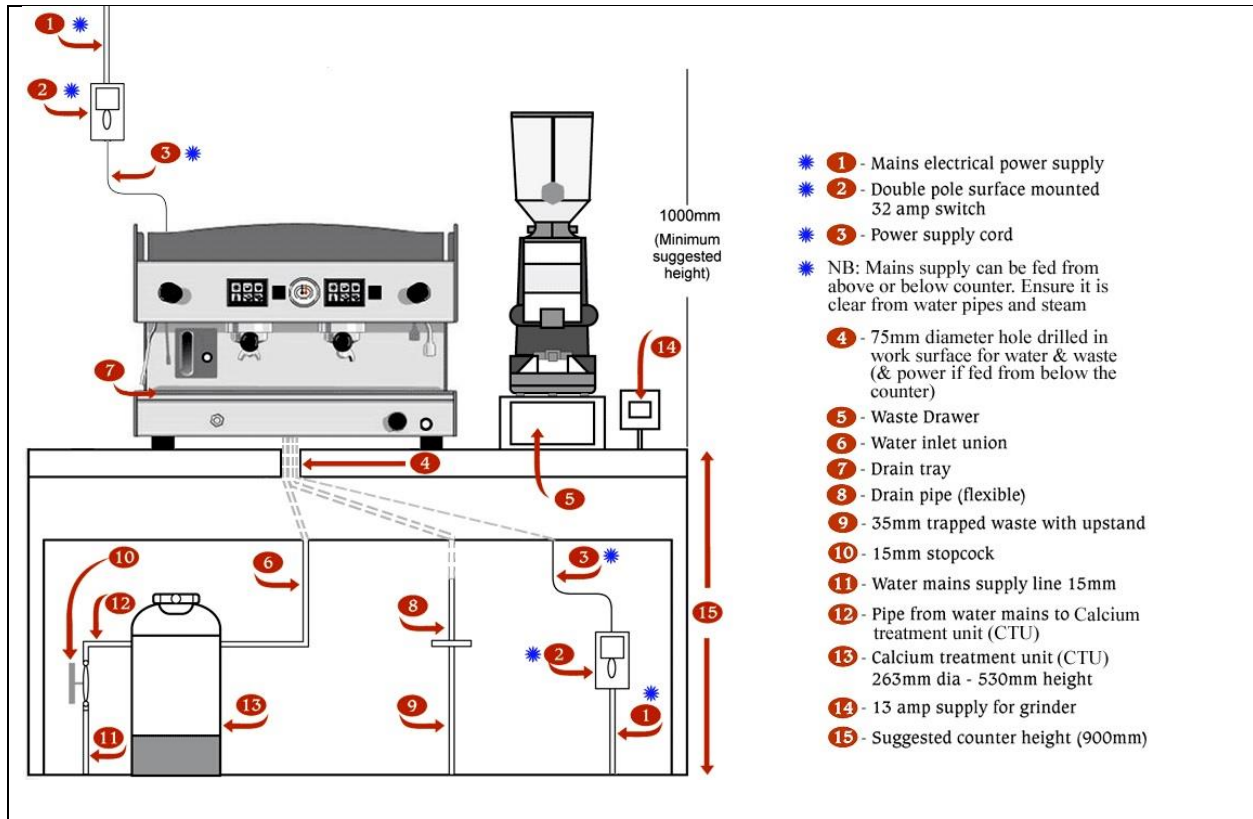


Install Guide for an Espresso Machine 20amp



Arden Coffee 01246 25 28 32

Below the guide will help you prepare for an Engineer to install your new coffee machine

Step 1 "The area"



2) Mains electrical supply;

 <p>Screw fix - 45A 1-GANG DP COOKER SWITCH WHITE WITH NEON (49779)</p> <p>Single phase – Breaker B20</p>	 <p>Screw fix 32A 2P+E SURFACE SOCKET 250V (9990F)</p>
--	--

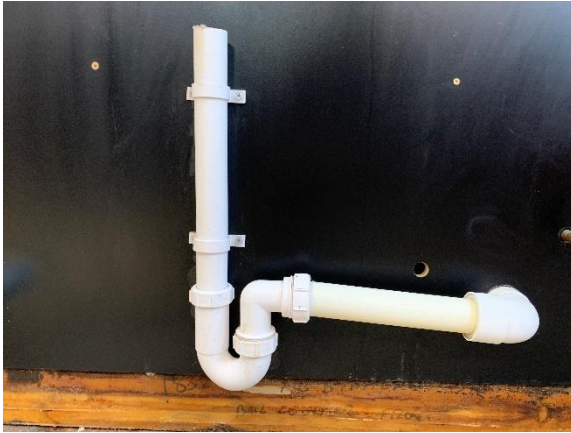
4) Hole drilled approx. 7 inches from counter front and directly in the middle of the coffee machine area

Hole size is 2.5 inches

*Our engineers maybe able to drill this hole for you depending on your counter top – please speak to us before the engineers arrival



9)



Picture above shows a 0.5m waste in place Screwfix Standpipe appliance trap white 40mm (94360)

Or if you cannot put a waste trap in you can use a bucket;



Screwfix Plastic bucket 14LTR (64253)

10)



Picture above of what a valve looks like once connected to a coffee machine pipe.



Screw fix Washing machine isolation valve (cold feed) 15MM X 3/4" (51231)

Water filter if you have ordered one looks like this;



Double sockets for grinder (one for coffee grinder other for another appliance “Milk shake machine, guest grinder, blender etc...”)



Screwfix 13A 2-GANG DP SWITCHED PLUG SOCKET
WHITE (15747)

Once all the site fixings are in place please think about the below;

Is there somewhere to park the engineers van when he attends your site?

He will need a lift with the espresso machine as it's a two-person lift

Have you got the cups you are going to be serving in? As these will be critical to set the coffee machine

Milk – If you want a lesson on how to use the machine you will need some milk ideally 4-pints

Please allow up to 1 hour 30 for install once he has arrived

Please remember if you have ordered a Hot Water Boiler you will need another water isolation valve!